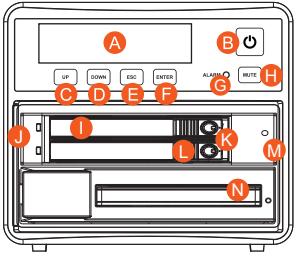


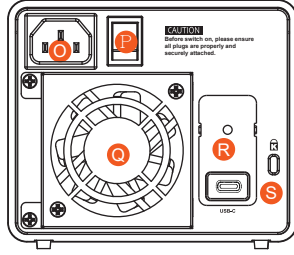
## ZR3MS-B31 / B31A / BA31 快速安裝導引

### 產品示意圖與配件表

前視圖



背視圖



- |                   |                  |                  |                                |
|-------------------|------------------|------------------|--------------------------------|
| <b>A</b> LCM 顯示螢幕 | <b>G</b> 系統警示燈   | <b>M</b> 靜音按鍵    | <b>R</b> USB 3.2 Gen2 Type-C 埠 |
| <b>B</b> 電源觸控開關   | <b>H</b> 靜音按鍵    | <b>N</b> 2.5吋硬碟槽 | <b>S</b> 防竊鎖孔                  |
| <b>C</b> UP 按鍵    | <b>I</b> 硬碟抽取盒把手 | <b>O</b> 電源插座    |                                |
| <b>D</b> DOWN 按鍵  | <b>J</b> 硬碟讀取燈   | <b>P</b> 電源總開關   |                                |
| <b>E</b> ESC 按鍵   | <b>K</b> 硬碟抽取盒鎖  | <b>Q</b> 風扇      |                                |
| <b>F</b> ENTER 按鍵 | <b>L</b> 頂出按鍵    |                  |                                |

打開包裝外盒後,包裝內容應包含以下組件:

ZR3MS 產品	X1( 內含抽取盒 x2)
USB 3.2 C to C 連接線 x1 (for ZR3MS-BA31 / ZR3MS-B31)	電源線
USB 3.2 C to A 連接線 x1 (for ZR3MS-BA31 / ZR3MS-B31A)	螺絲及鑰匙
快速安裝導引 x1	

- 請確認相關配件與產品本身是否有受損或配件缺少,若有任何疑問請與本產品供應商聯絡。
- 請前往官網 ([www.stardom.com.tw](http://www.stardom.com.tw)) 下載說明書、驅動程式以及其餘相關資源。



V1.0(DEC. 2022)

1

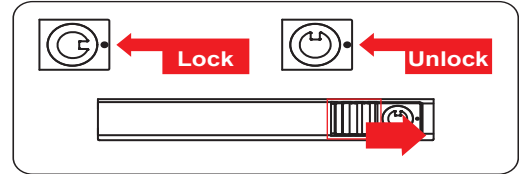
## 燈號與蜂鳴器顯示訊息

狀態	硬碟指示燈	系統警示燈	蜂鳴器
無硬碟	紅燈恆亮	紅燈恆亮	YES
資料存取	紫燈閃爍	---	---
硬碟閒置	藍燈恆亮	---	---
資料重建 - 來源碟	藍燈恆亮	---	---
資料重建 - 資料碟	紅燈閃爍	---	---
風扇故障	藍燈恆亮	紅燈恆亮	YES
溫度過高 (≥ 50°C)	藍燈恆亮	紅燈恆亮	YES

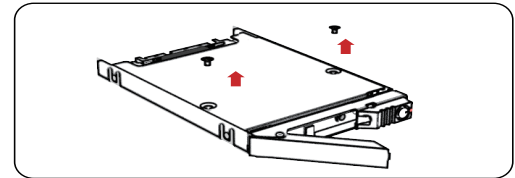
## 硬體安裝

請參照下列步驟,完成 ZR3MS 的硬體安裝:

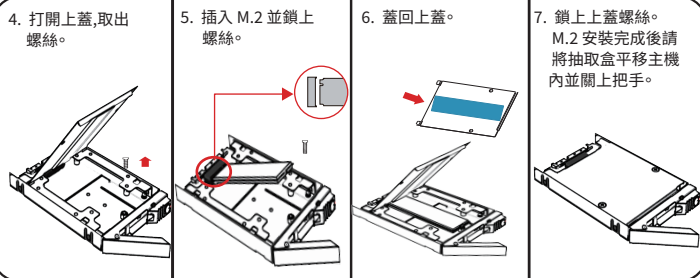
- 將主機置放於平穩空間上,並確認散熱風扇沒有被擋住,且四周有適當的散熱空間。(請避免接近水源或是其他容易造成產品損傷的環境)
- 2.5吋硬碟抽盒的部份,請使用零件包內附的鑰匙解鎖硬碟抽取盒鎖,將頂出按鍵向右推移,硬碟抽取盒把手便會彈開,即可取出抽取盒。



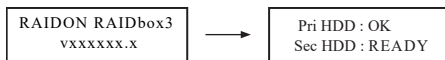
- 抽出M.2 SATA Bridge 托盤組,取下上蓋的2顆螺絲。



2



- 將電源線與 ZR3MS 連接,再將電源線與電源插座連接。
- 視電腦 USB 埠類型選擇配件中的對應的 USB 連接線,連接電腦與ZR3MS的 USB 埠。
- 將產品背面的電源總開關扳動至「I」讓電源開啟後,產品正面的電源觸控開關會亮紅燈,再輕壓產品正面的電源觸控開關,直到電源符號「O」轉變為藍燈。
- 當 LCM 顯示螢幕顯示如下圖,即完成開機。

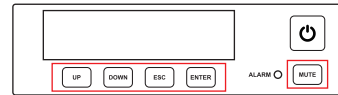


- 若暫時不使用產品,可讓產品進入關機模式:先輕壓產品正面的電源觸控開關,直到電源符號「O」轉為紅燈;若要使用產品則輕壓產品正面的電源觸控開關,直到電源符號「O」轉為藍燈。
- 假使長時間不使用產品,則請將產品電源總開關關閉:先輕壓產品正面的電源觸控開關,直到電源符號「O」轉為紅燈,再將產品背面的電源總開關扳動至「O」讓電源關閉。

- 本產品在關機模式下為接近完全斷電的狀態,硬碟、LCM 與風扇均停止運作,僅提供一小部分電力為之後啟動作準備。
- 若您使用的是 USB 3.2 C to A 連接線,主機端的 Type-A 需為 USB 3.2 Gen2 規格方可達到最佳存取效能。

3

## 前面板操作



- Enter: 進入下一層 或是 確認
- Esc: 跳回上一層 或是 取消
- Up / Down: 循序選擇項目
- MUTE: 在蜂鳴器鳴響時關閉蜂鳴器

- 如需進行其他設定,請進入官網相關產品頁面下載使用者手冊,參照章節 5 至章節 9 進行操作。

## 產品使用注意事項

- 硬碟格式化後,由電腦主機作業系統所辨識 ZR3MS 的實際總容量會與硬碟廠所標示的容量加總後,將有所差異。
- 當系統運作時,請勿任意移除,以免導致資料遺失。
- 完成系統初始化安裝後,在使用上請勿任意變更硬碟位置;此動作將可能導致系統無法形成 RAID。
- RAID 模式一旦設定完成,若要進行切換,因切換過程中將會清除硬碟中的資料,請務必先將硬碟中的資料另行備份後再行切換。
- 在新增或變更 RAID 模式後需重新啟動產品,以確保完成更新為新的 RAID 模式。
- 當您需要關閉或移除 ZR3MS時,務必透過您所操作的作業系統中執行硬碟安全移除後,方進行電源關閉的動作。
- 強烈建議除了使用 ZR3MS的資料儲存功能外,請針對重要資料備份到另一個儲存裝置上或遠端備份,雙重備份您重要的資料。若您儲存在 ZR3MS的資料損毀或遺失,STARDOM 將不負任何的責任。
- 本產品支援外接硬碟安裝 Windows 與 Mac 作業系統,詳細說明請見該產品相關使用者手冊。

感謝您使用 銳銜科技股份有限公司 的產品。

本手冊裡的資訊在出版前雖然已經被詳細確認,但實際產品規格將已出貨時為準;任何的產品規格或相關資訊更新,請您直接上 [www.STARDOM.com.tw](http://www.STARDOM.com.tw) 網站查詢,或直接與您的業務聯絡窗口聯繫,本公司將不另行通知。

如果您對 銳銜科技 的產品有任何疑問,或是想獲得最新產品訊息、使用手冊或軟體,請您聯絡 [services@stardom.com.tw](mailto:services@stardom.com.tw);我們將儘速回覆您。

STARDOM 為 銳銜科技股份有限公司 旗下品牌之一  
本說明相關產品內容歸 銳銜科技股份有限公司 版權所有

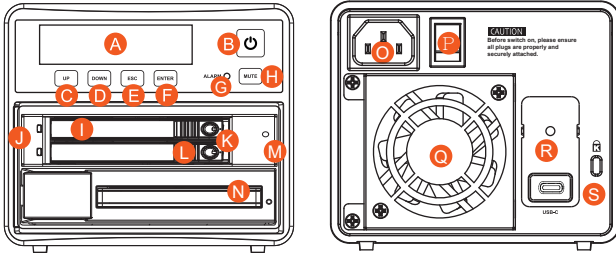
4

## ZR3MS-B31 / B31A / BA31 Quick Setup Guide

### Product Illustration and Parts List

Front View

Rear View



- |                             |                                  |                                   |
|-----------------------------|----------------------------------|-----------------------------------|
| <b>A</b> LCM display        | <b>H</b> Mute button             | <b>O</b> Power socket             |
| <b>B</b> Power touch switch | <b>I</b> HDD enclosure handle    | <b>P</b> Main Power switch        |
| <b>C</b> UP button          | <b>J</b> HDD access light        | <b>Q</b> Fan                      |
| <b>D</b> DOWN button        | <b>K</b> HDD tray key lock       | <b>R</b> USB 3.2 Gen2 Type-C port |
| <b>E</b> ESC button         | <b>L</b> HDD Tray Ejection       | <b>S</b> Anti-theft lock          |
| <b>F</b> ENTER button       | <b>M</b> Mute button             |                                   |
| <b>G</b> Alarm indicator    | <b>N</b> 2.5" drive tray adapter |                                   |

The following items should be inside the package upon opening:

ZR3MS product x 1 ( with removable drive tray enclosed x 2)	
USB 3.2 C to C cable x1 (for ZR3MS-BA31 / ZR3MS-B31)	Power Cable x1
USB 3.2 C to A cable x1 (for ZR3MS-BA31 / ZR3MS-B31A)	Screws & KEY
Quick Installation Guide x1	

- Please check the product and accessories for any defect or missing parts. If you have any questions, please contact your product supplier.
- Please visit the official website - Download page ([www.stardom.com.tw](http://www.stardom.com.tw)) to download other related resources.



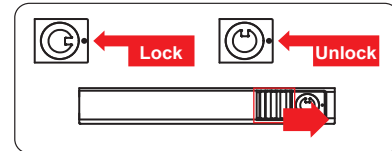
### The Indication of HDD Status

Status	HDD access light	Alarm indicator	Buzzer
No M.2	Red light always on	Red light always on	YES
Access	Purple light flashing	---	---
M.2 Idle	Blue light always on	---	---
Rebuilding - Source	Blue light always on	---	---
Rebuilding - Target	Red light flashing	---	---
Fan Failed	Red light always on	Red light always on	YES
Over Temp (≥ 50°C)	Blue light always on	Red light always on	YES

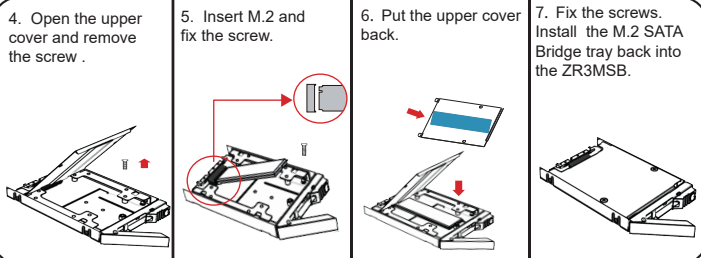
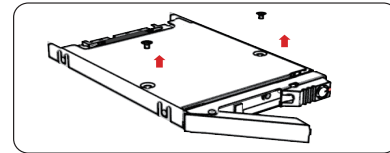
### Hardware Installation

Please install ZR3MS as the following instruction.

1. Place the system on a stable surface. Ensure that it is well ventilated without blockage to the vent and kept away from areas near water and damage prone areas.
2. For the 2.5" HDD tray, please use the key included in the accessory kit to unlock the 2.5" HDD tray key lock and push the HDD eject button to the right, the 2.5" HDD tray handle will pop up to remove the tray.

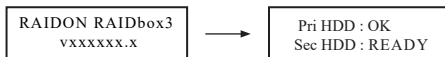


3. Pull out the M.2 SATA Bridge tray set, and remove the 2 screws on the upper cover.



4. Open the upper cover and remove the screw.
5. Insert M.2 and fix the screw.
6. Put the upper cover back.
7. Fix the screws. Install the M.2 SATA Bridge tray back into the ZR3MSB.

8. Connect power cable to your power outlet and ZR3MSB.
9. Depending on the type of computer USB port, select the corresponding USB cable in the accessory to connect the computer to the ZR3MSB.
10. First turn the main power switch on the back of the product to "I" to turn the power on, the power touch switch on the front of the product will light red, then gently press the power touch switch on the front of the product until the power symbol "O" turns into a blue light.
11. When the LCM display shows the following picture, the power on is complete.  
※ The factory default value of ZR3MS is RAID 1 mode.

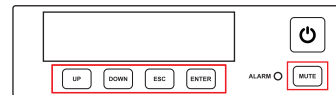


12. If the product is not in use at the moment, the product can be put into power-off mode: first press the power touch switch on the front of the product until the power symbol "O" turns to red; to use the product, press the power touch switch on the front of the product until the power symbol "O" turns to blue.
13. If the product is not used for a long time, please turn off the product main power switch: first gently press the power touch switch on the front of the product until the power symbol "O" turns to red, then turn the power main switch on the back of the product to "O" to turn off the power.

※ The product is in a state of near-complete power-off in shutdown mode, and the hard disk, LCM, and fan are all out of operation, providing only a small portion of power for preparation for subsequent startup.

※ If you are using a USB 3.2 C to A cable, the Type-A on the host side must be USB 3.2 Gen2 for best access performance.

### Description of Front Panel Operation



- Enter: Enter to next level or Confirm
- Esc: Back to next level or Cancel
- Up / Down: Select Items
- MUTE: Turn off the buzzer when the buzzer sounds

- For other settings, please go to the relevant product page on the official website, download the user's manual, and refer to chapters 5 to 9 for operation.

### Important Notice

1. After the hard disk is formatted, the actual total capacity of the ZR3MS detected by the computer operating system will vary from the sum of all hard disk capacities stated by the manufacturer.
2. To prevent data loss, do not remove ZR3MS while the system is running.
3. Once the system has been initialized, do not switch hard disks around during use. Doing so may prevent the RAID from being recognized by the system.
4. Once RAID mode has been set up, the switching of hard drives will lead to the removal of data from the hard disks. Please be sure to backup the data on the hard disk before making any switches.
5. The product needs to be restarted after adding or changing the RAID mode, and the update is guaranteed to be the new RAID mode.
6. If the ZR3MS needs to be shut down or disconnected, please ensure the HDD is safely removed through your operating system before turning off the power.
7. We strongly recommend backing up important data stored on the ZR3MS to another storage device or a remote site. STARDOM will not be held liable for the damage or loss of data you stored on the ZR3MS.
8. If you need to install the operation system such like Windows or macOS into this device, please refer to the user manual for details.

Thank you for choosing STARDOM's product.

The information provided in this manual was checked before publication, but the actual product specifications may have changed before shipping; Latest product specifications and updates can be found at [www.STARDOM.com.tw](http://www.STARDOM.com.tw) or through your sales representative. No separate notifications will be provided by our company. If you have any questions about RAIDON products or would like to receive the latest product information, instruction manuals, or firmware, please contact [services@stardom.com.tw](mailto:services@stardom.com.tw) for assistance.